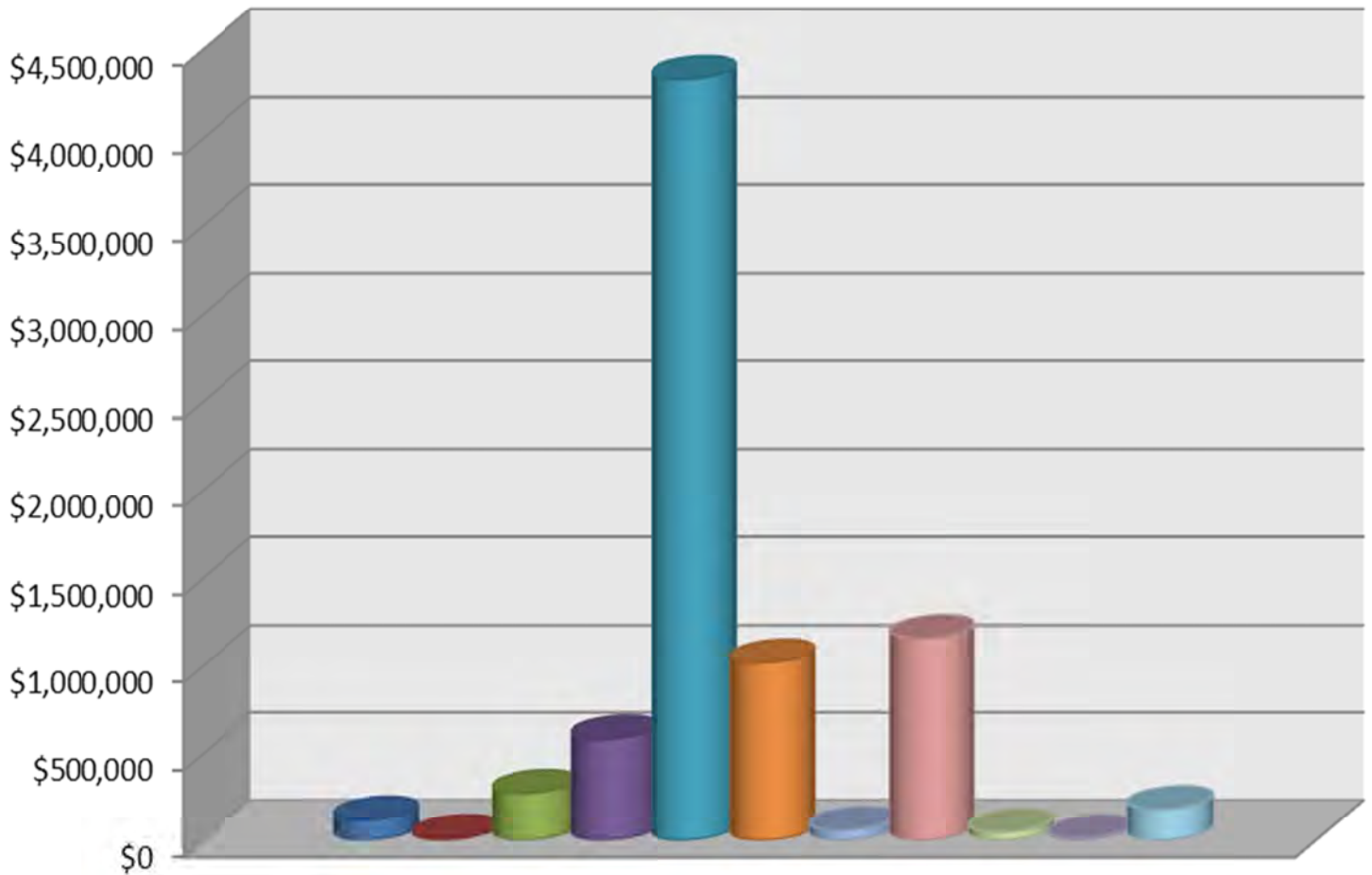
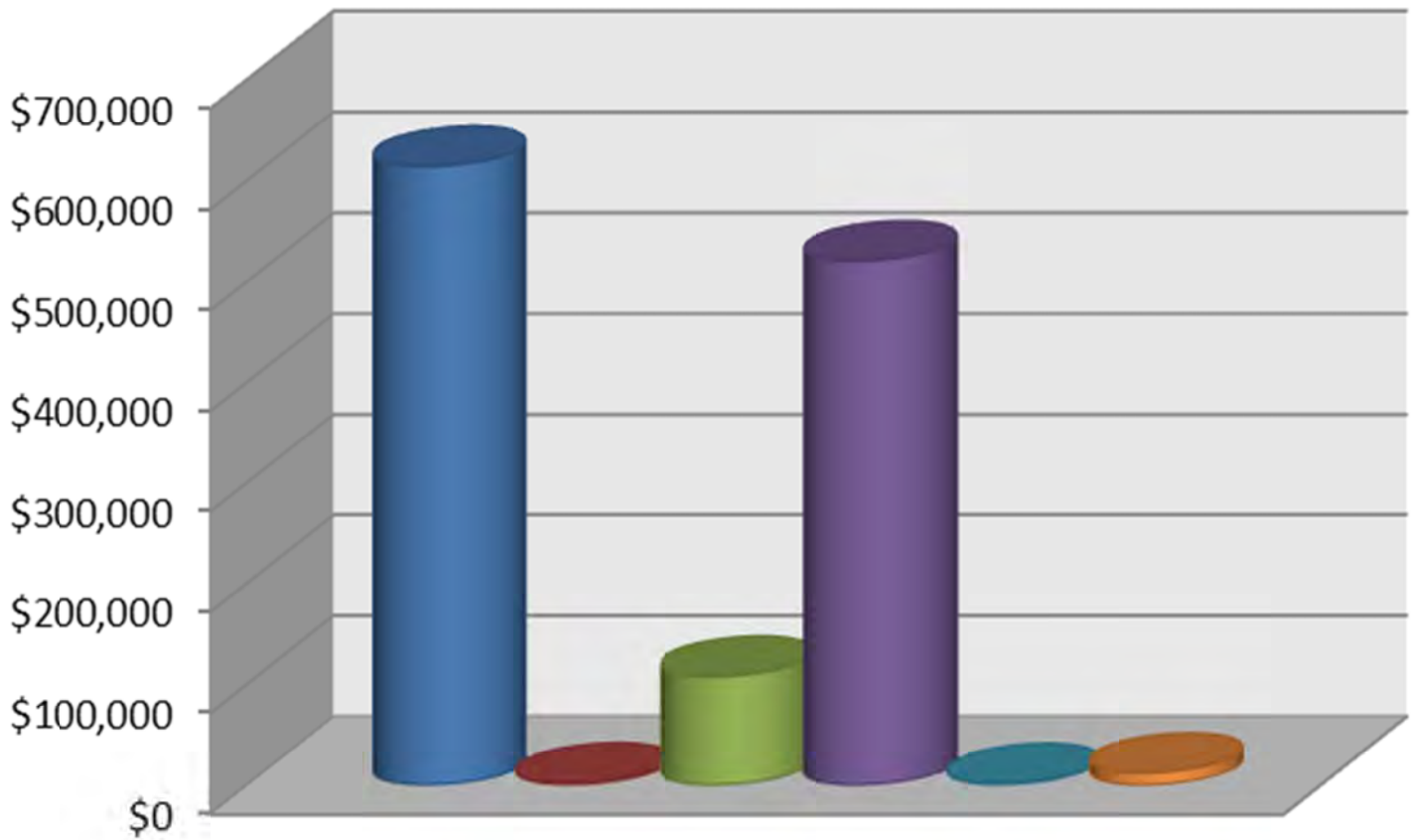


# Federal Funding - \$7,778,725



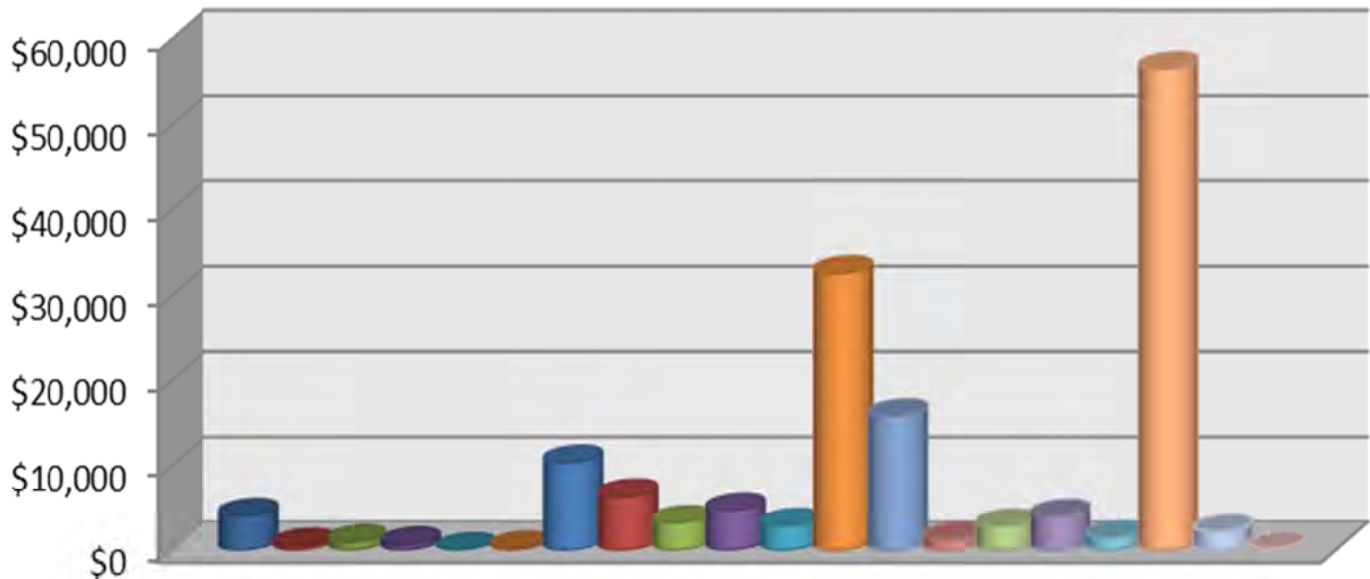
- CDBG Smart Start Grant - \$118,315
- CHDO - \$12,183
- Child and Adult Care Food Program (U.S. Dept. of Agriculture) - \$271,102
- Community Service Block Grant (U.S. Dept. of Health and Human Services) - \$579,670
- Head Start (U.S. Dept. of Health and Human Services) - \$4,328,215
- LIHEAP (U.S. Dept. of Health and Human Services) - \$1,016,056
- Missouri Work Assistance (U.S. Dept. of Health and Human Services) - \$58,316
- Section 8 Housing Choice Vouchers (U.S. Dept. of Housing and Urban Development) - \$1,155,160
- Shelter Plus Program (Dept. of Mental Health) - \$48,783
- Supportive Services for Veteran Families Program (U.S. Dept. of Veterans Affairs) - \$12,813
- Weatherization (Dept. of Energy) - \$178,110

# State Funding - \$1,261,038



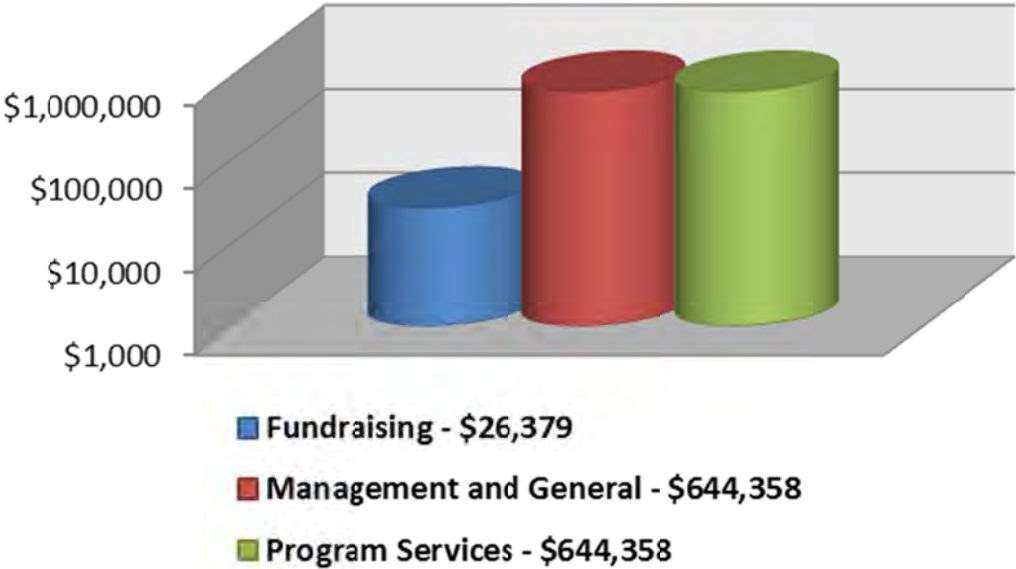
- Early Head State (State of Missouri) - \$614,415
- Head Start (Farm to Preschool) - \$2,797
- LIHEAP (Utilicare) - \$108,077
- Missouri Work Assistance (State of Missouri) - \$520,968
- Rental Assistance Program - \$2,277
- Utilicare - \$12,503

# Donated Local Funds - \$151,220

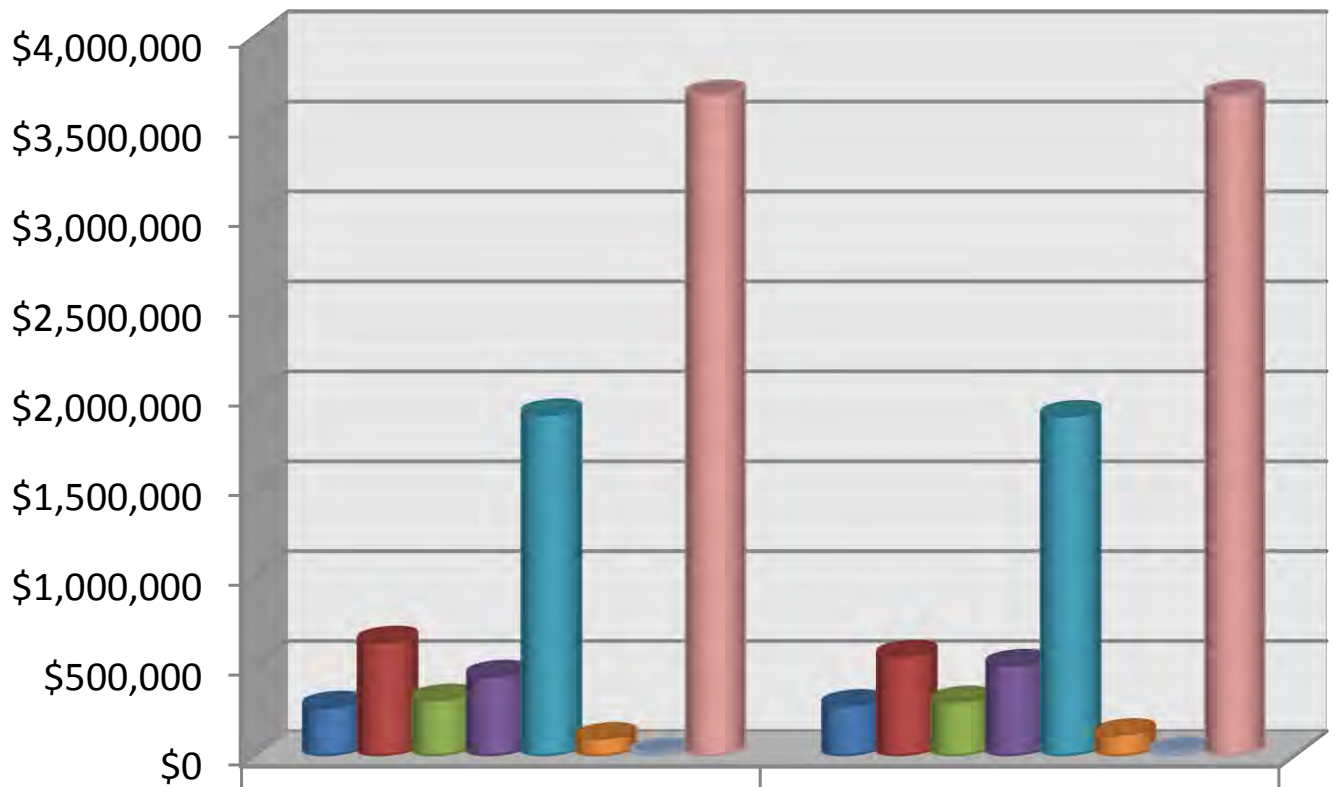


- |                                     |  |
|-------------------------------------|--|
| ■ AWARE - \$4,101                   | ■ Carroll Helping Hands - \$575            |
| ■ Carroll School - \$1,000          | ■ Chariton School - \$715                  |
| ■ Empire - \$55                     | ■ Head Start - \$226                       |
| ■ HEAT - \$10,342                   | ■ Johnson Help Now - \$6,365               |
| ■ Johnson School - \$3,270          | ■ KCP&L - \$4,734                          |
| ■ KCP&L - \$2,922                   | ■ KCPL GMOC - \$32,561                     |
| ■ KCPL GMOC - \$15,768              | ■ Lafayette Help Now - \$1,301             |
| ■ Lafayette School - \$2,850        | ■ Lexington Ministerial Alliance - \$4,000 |
| ■ Missouri American Water - \$1,500 | ■ MO Gas Energy - \$56,480                 |
| ■ Pettis Help Now - \$2,230         | ■ Ray School - \$225                       |

# Admin Program - \$1,315,096

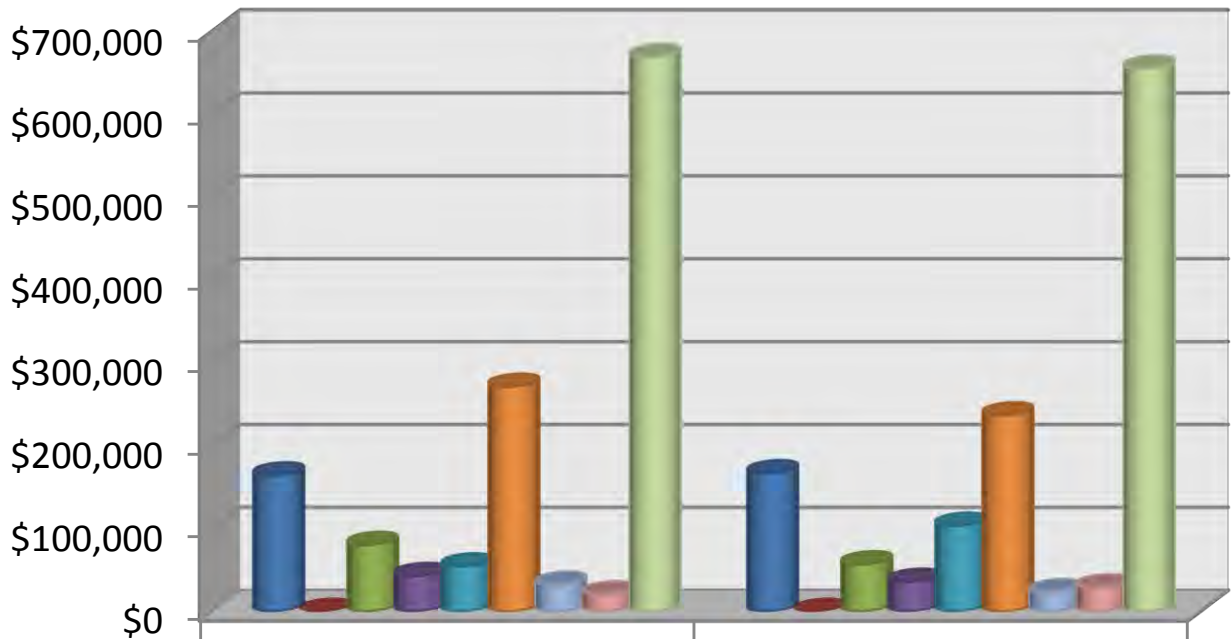


# Head Start



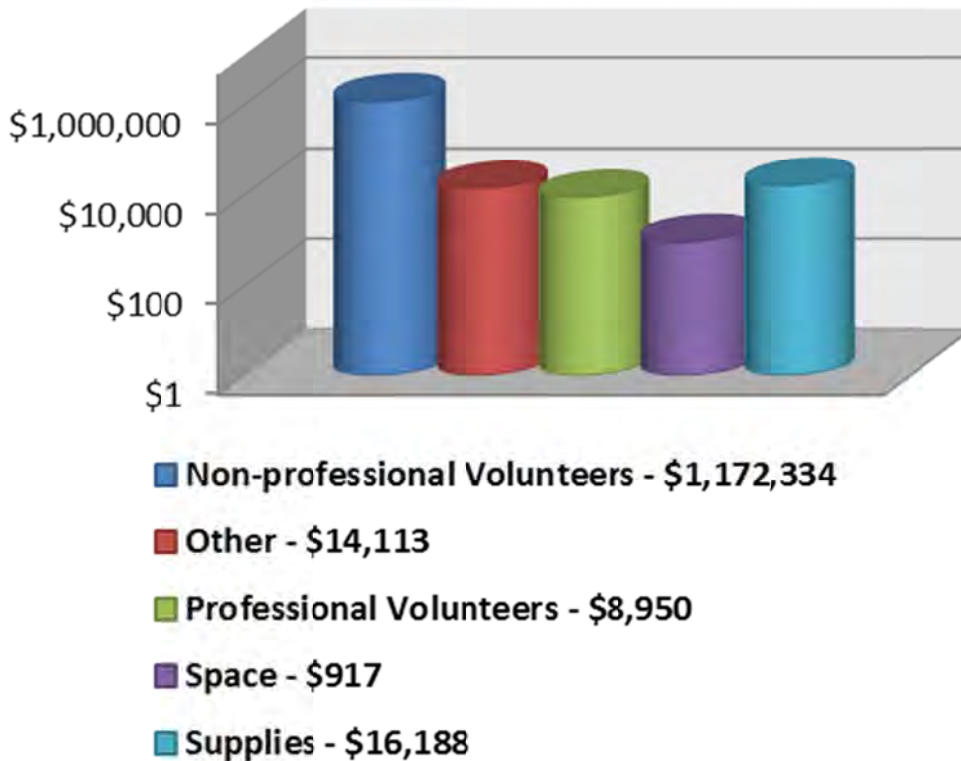
	Proposed Budget	Expenditures
Contractual	\$272,241	\$280,932
Fringe	\$633,860	\$555,901
Indirect Cost	\$311,384	\$300,752
Other	\$444,259	\$505,060
Personnel	\$1,897,711	\$1,889,239
Supplies	\$98,080	\$119,458
Travel	\$15,049	\$21,242
<b>Total</b>	<b>\$3,672,584</b>	<b>\$3,672,584</b>

## EHS - Exp and CC Partnerships



	Proposed Budget	Expenditures
■ Contractual	\$164,640	\$167,289
■ Equipment	\$0	\$0
■ Fringe	\$80,849	\$57,438
■ Indirect Cost	\$43,362	\$36,235
■ Other	\$54,916	\$104,021
■ Personnel	\$271,683	\$237,156
■ Supplies	\$32,864	\$23,736
■ Travel	\$21,145	\$29,755
■ Total	\$669,459	\$655,630

## Head Start In-Kind - \$1,212,501



## Early Head Start In-Kind - \$100,263

